

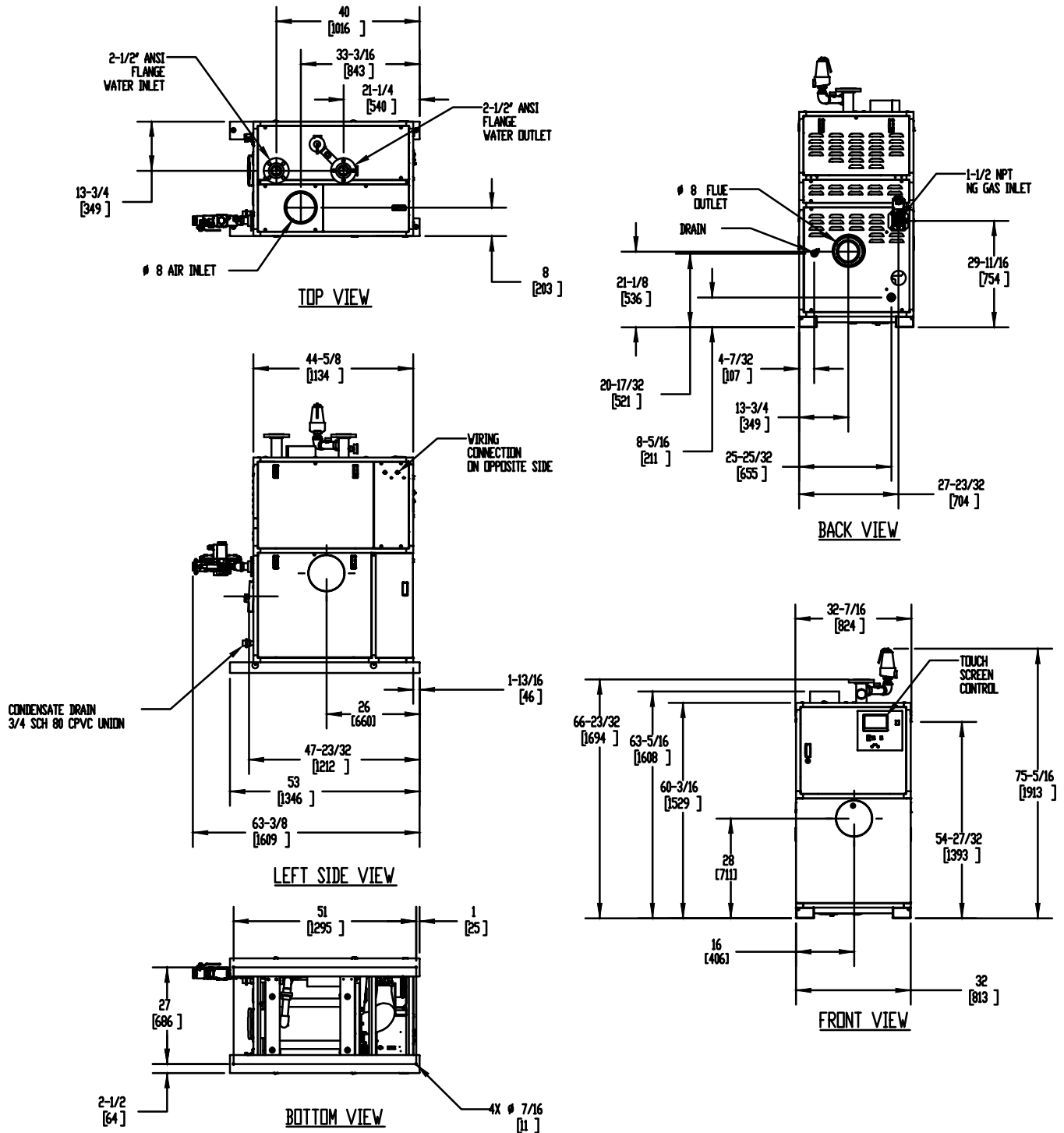
# TORUS 1250 VERTICAL

Category II or Category IV Appliance  
(see Installation and Operation Manual for venting information)

## CODE OPTIONS

|       |   |
|-------|---|
| CSD-1 | FIRMWARE W/REMOTE<br>TEST MANUAL RESET LWCO |
|-------|---|

## INDOOR UNIT



### Notes:

1. Dimensions are approximate and should not be used to "rough-in" equipment.
2. Dimensions are subject to change without notice.
3. All dimensions are in inches (mm).
4. ● Symbol indicates center of gravity.

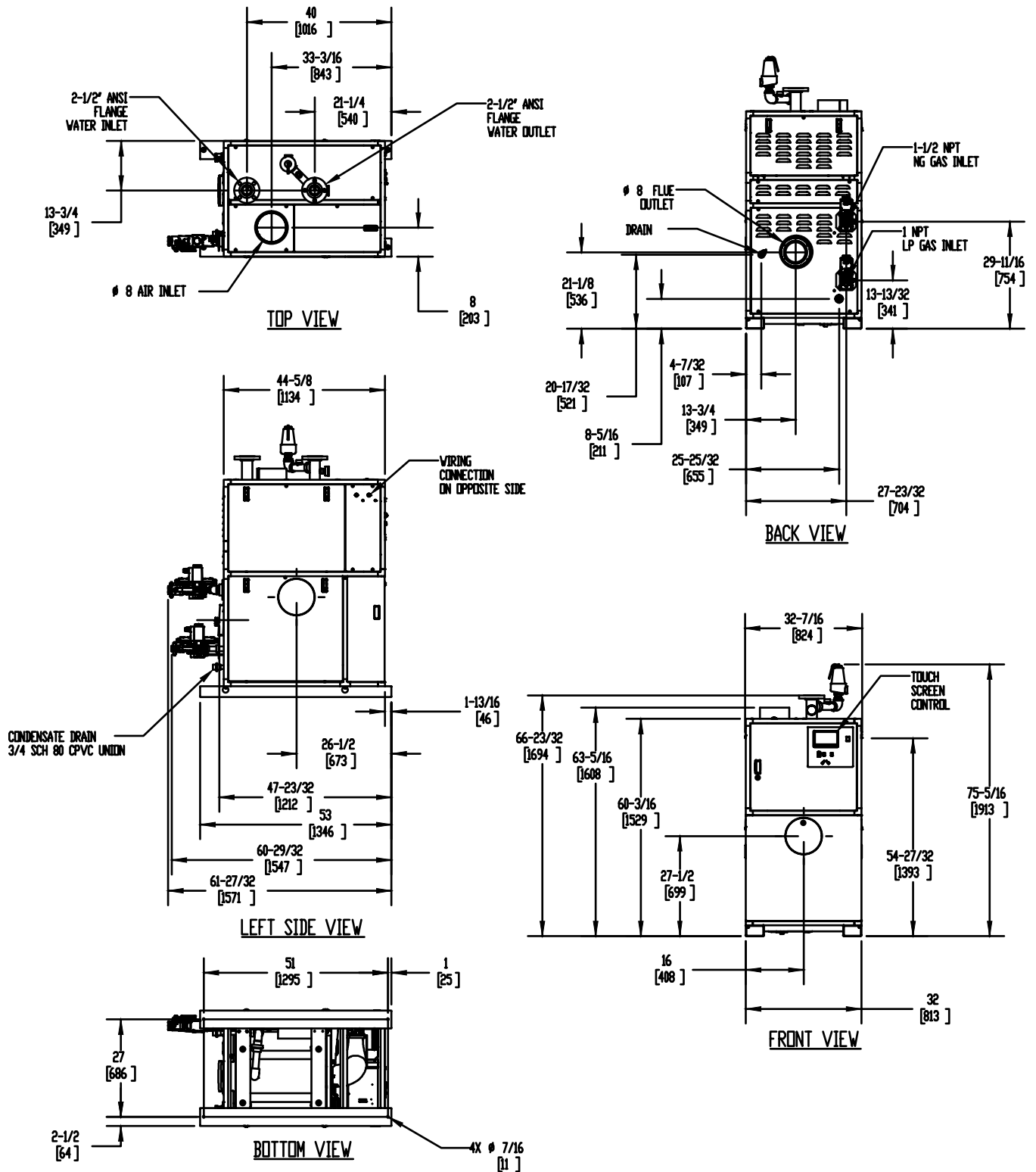
# TORUS 1250 VERTICAL

Category II or Category IV Appliance  
(see Installation and Operation Manual for venting information)

## CODE OPTIONS

|       |   |
|-------|---|
| CSD-1 | FIRMWARE W/REMOTE<br>TEST MANUAL RESET LWCO |
|-------|---|

## DUAL FUEL UNIT



### Notes:

1. Dimensions are approximate and should not be used to "rough-in" equipment.
2. Dimensions are subject to change without notice.
3. All dimensions are in inches (mm).
4. ● Symbol indicates center of gravity.

## BOILER CERTIFIED RATINGS & CAPACITIES

|                                |                     |                                   |                   |
|--------------------------------|---------------------|-----------------------------------|-------------------|
| <b>Fuel Type</b>               | Natural/Propane Gas | <b>Boiler FLA</b>                 | 17.14*            |
| <b>Input BTU/hr.</b>           | 1,250,000 / 366 kW  | <b>Boiler HP</b>                  | 36.04             |
| <b>Output BTU/hr.</b>          | 1,206,250 / 353 kW  | <b>Min. Gas Pressure Required</b> | 4" W.C.           |
| <b>Electrical Requirements</b> | 120 VAC/60 Hz/1PH   | <b>Max. Gas Pressure Allowed</b>  | 14" W.C.          |
|                                |                     | <b>Operating Weight</b>           | 1084 lbs / 492 kg |

## BOILER TRIM & CONTROLS

|  |               |                            |                          |
|--|---------------|----------------------------|--------------------------|
| <b>Main Gas Valve</b>  | Dungs MBC     | <b>Air Switch</b>          | Huba                     |
| <b>Firing Valve</b>  | 1" Apollo     | <b>Flow Switch</b>         | SIKA                     |
| <b>Ignition Control</b>  | Fenwal        | <b>Blocked Flue Switch</b> | Cleveland NS2            |
| <b>Operating Control</b>   | HeatNet®      | <b>Blower Motor</b>        | Ametek                   |
| <b>High Limit</b>  | Jumo          | <b>L.W.C.O.</b>            | 800                      |
| <b>Main Ball Valve</b>   | 1 1/2" Apollo | <b>Relief Valve (WB)</b>   | 1" x 1-1/4" set @ 50 psi |
| Pump contactor strongly recommended for water heater applications. |               | <b>Relief Valve (WW)</b>   | 1" x 1" set @ 125 psi    |

## A.S.M.E.

|  |                              |                     |                       |
|--|------------------------------|---------------------|-----------------------|
| <b>ASME Sect IV Fire Side Htg Surface</b>  | 100.17 Sq. Ft. / 9.31 Sq. M. | <b>Design Data</b>  | Max. 160 psig & 210°F |
| <b>ASME Sect IV Water Side Htg Surface</b> | 92.93 Sq. Ft. / 8.63 Sq. M.  | <b>Water Volume</b> | 11 gal. / 41.6 Liters |

\* Add circulator amps.

## BOILER TEMPERATURE RISE / PRESSURE DROP (Based on Full Input)

| 20°F / 11.1°C |     |               |      | 30°F / 16.7°C |     |               |      | 40°F / 22.2°C |     |               |      | 50°F / 27.8°C |     |               |      | 60°F / 33.3°C |     |               |     |
|---------------|-----|---------------|------|---------------|-----|---------------|------|---------------|-----|---------------|------|---------------|-----|---------------|------|---------------|-----|---------------|-----|
| Flow Rate     |     | Pressure Drop |      | Flow Rate     |     | Pressure Drop |      | Flow Rate     |     | Pressure Drop |      | Flow Rate     |     | Pressure Drop |      | Flow Rate     |     | Pressure Drop |     |
| GPM           | L/s | Ft            | kPa  | GPM           | L/s | Ft            | kPa  | GPM           | L/s | Ft            | kPa  | GPM           | L/s | Ft            | kPa  | GPM           | L/s | Ft            | kPa |
| 120.7         | 7.6 | 15.4          | 45.9 | 80.4          | 5.1 | 7.3           | 21.7 | 60.3          | 3.8 | 4.7           | 13.9 | 48.3          | 3.0 | 3.6           | 10.7 | 40.2          | 2.5 | 3.0           | 9.1 |

## WATER HEATER HOURLY RECOVERY CAPACITY (GPH & LPH)

|      |       |      |      |      |      |       |      |       |      |       |      |
|------|-------|------|------|------|------|-------|------|-------|------|-------|------|
| 40°F | 22°C  | 60°F | 33°C | 80°F | 44°C | 100°F | 56°C | 120°F | 67°C | 140°F | 78°C |
| 3639 | 13755 | 2426 | 9170 | 1819 | 6878 | 1456  | 5502 | 1213  | 4585 | 1040  | 3930 |

| Flow GPM |       | Temp. Rise** (°F) |     | Vent Length (Equiv. Ft.) |     | Air Inlet Length (Equiv. Ft.) |     |
|----------|-------|-------------------|-----|--------------------------|-----|-------------------------------|-----|
| Min      | Max   | Min               | Max | Min                      | Max | Min                           | Max |
| 40.2     | 120.7 | 20                | 60  | 8                        | 160 | 0                             | 160 |

\*\* Min/Max delta t reflects boiler operation at full input. For applications requiring operation above/below these parameters please consult factory.

**REP FIRM** \_\_\_\_\_  
**SUBMITTED BY** \_\_\_\_\_  
**JOB NAME** \_\_\_\_\_  
**ARCHITECT** \_\_\_\_\_  
**ENGINEER** \_\_\_\_\_  
**CONTRACTOR** \_\_\_\_\_  
**DATE** \_\_\_\_\_

# TORUS 1250 VERTICAL

**Category II or Category IV Appliance**  
(see Installation and Operation Manual for venting information)



A Division of Mestek, Inc.  
Westfield, MA 01085  
(413) 564-5515

# TORUS 1500 VERTICAL

Category II or Category IV Appliance

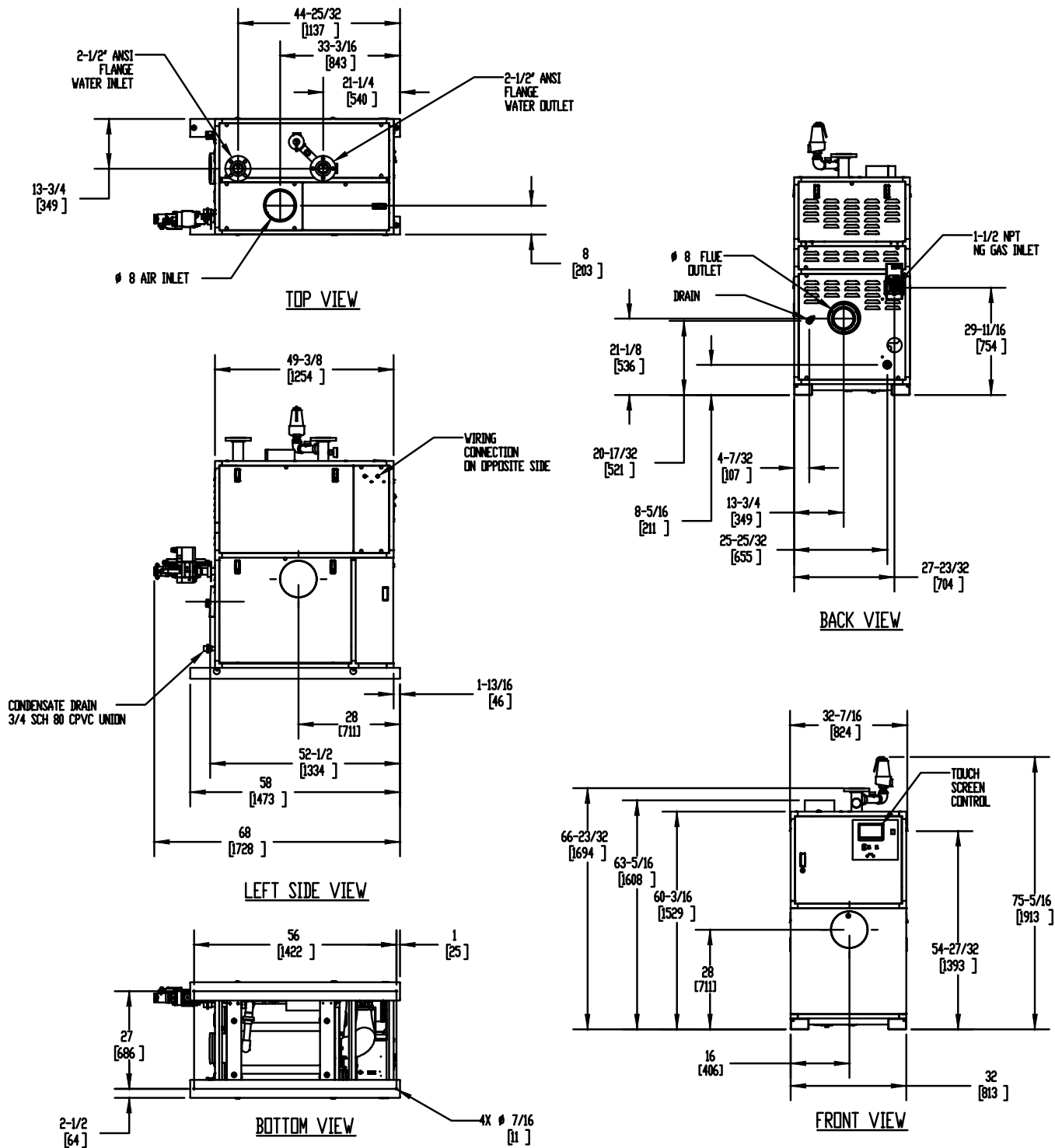
(see Installation and Operation Manual for venting information)

## CODE OPTIONS


CSD-1

FIRMWARE W/REMOTE  
TEST MANUAL RESET LWCO

## INDOOR UNIT



### Notes:

1. Dimensions are approximate and should not be used to "rough-in" equipment.
2. Dimensions are subject to change without notice.
3. All dimensions are in inches (mm).
4.  Symbol indicates center of gravity.

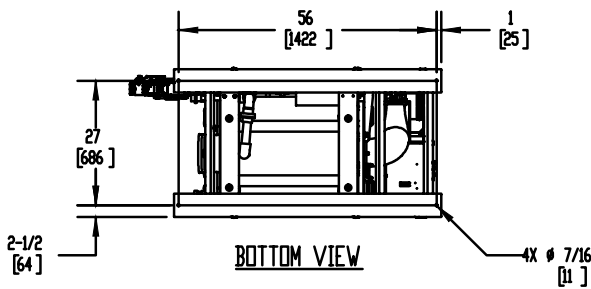
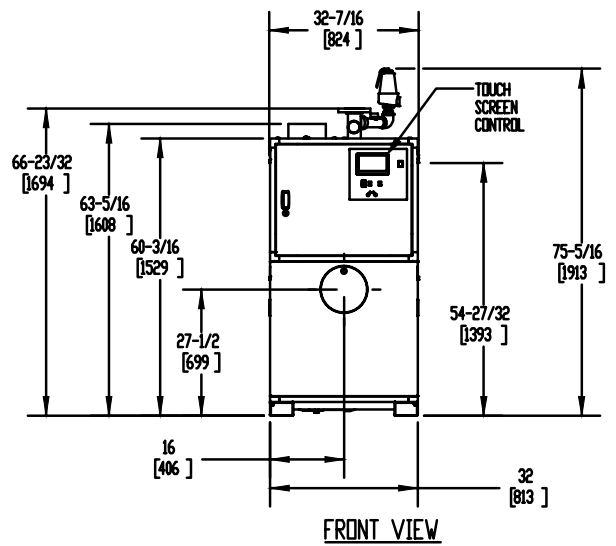
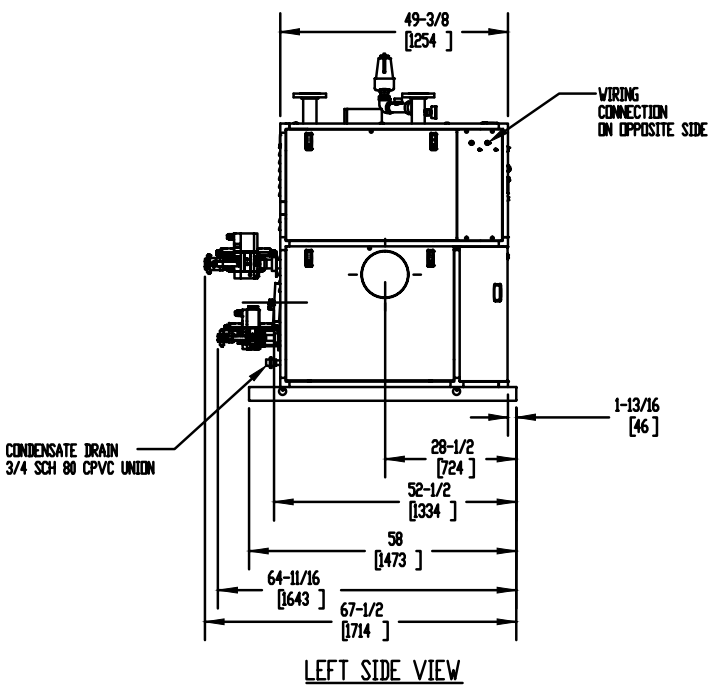
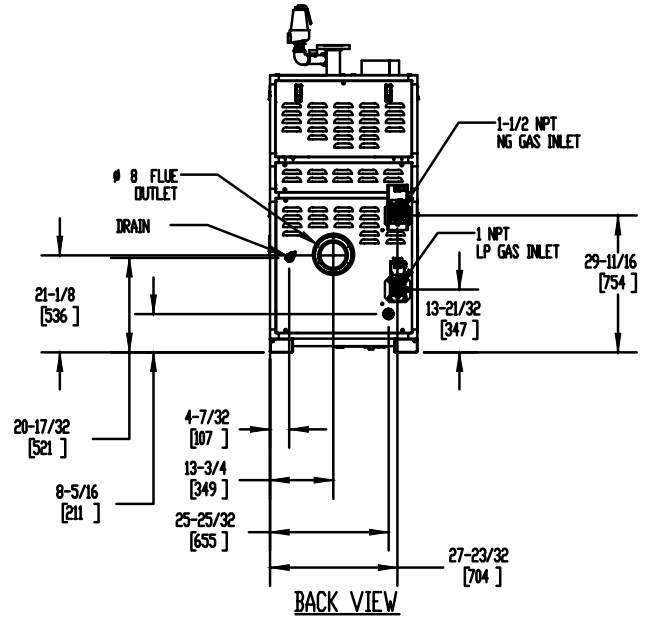
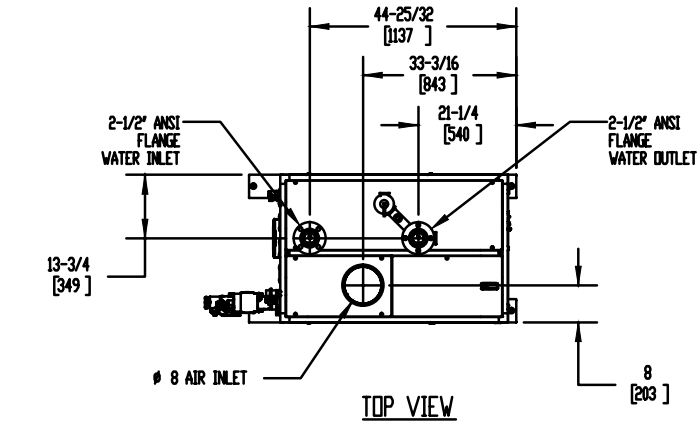
# TORUS 1500 VERTICAL

Category II or Category IV Appliance  
(see Installation and Operation Manual for venting information)

## CODE OPTIONS

|       |   |
|-------|---|
| CSD-1 | FIRMWARE W/REMOTE<br>TEST MANUAL RESET LWCO |
|-------|---|

## DUAL FUEL UNIT



### Notes:

1. Dimensions are approximate and should not be used to "rough-in" equipment.
2. Dimensions are subject to change without notice.
3. All dimensions are in inches (mm).
4. ● Symbol indicates center of gravity.

## BOILER CERTIFIED RATINGS & CAPACITIES

|                                |                     |                                   |                   |
|--------------------------------|---------------------|-----------------------------------|-------------------|
| <b>Fuel Type</b>               | Natural/Propane Gas | <b>Boiler FLA</b>                 | 17.14*            |
| <b>Input BTU/hr.</b>           | 1,500,000 / 440 kW  | <b>Boiler HP</b>                  | 43.25             |
| <b>Output BTU/hr.</b>          | 1,447,500 / 424 kW  | <b>Min. Gas Pressure Required</b> | 4" W.C.           |
| <b>Electrical Requirements</b> | 120 VAC/60 Hz/1PH   | <b>Max. Gas Pressure Allowed</b>  | 14" W.C.          |
|                                |                     | <b>Operating Weight</b>           | 1183 lbs / 537 kg |

## BOILER TRIM & CONTROLS

|                          |               |                            |                          |
|--------------------------|---------------|----------------------------|--------------------------|
| <b>Main Gas Valve</b>    | Dungs MBC     | <b>Air Switch</b>          | Huba                     |
| <b>Firing Valve</b>      | 1" Apollo     | <b>Flow Switch</b>         | SIKA                     |
| <b>Ignition Control</b>  | Fenwal        | <b>Blocked Flue Switch</b> | Cleveland NS2            |
| <b>Operating Control</b> | HeatNet®      | <b>Blower Motor</b>        | Ametek                   |
| <b>High Limit</b>        | Jumo          | <b>L.W.C.O.</b>            | 800                      |
| <b>Main Ball Valve</b>   | 1 1/2" Apollo | <b>Relief Valve (WB)</b>   | 1" x 1-1/4" set @ 50 psi |
|                          |               | <b>Relief Valve (WW)</b>   | 1" x 1" set @ 125 psi    |

Pump contactor strongly recommended for water heater applications.

## A.S.M.E.

|  |                               |                     |                       |
|--|-------------------------------|---------------------|-----------------------|
| <b>ASME Sect IV Fire Side Htg Surface</b>  | 119.8 Sq. Ft. / 11.13 Sq. M.  | <b>Design Data</b>  | Max. 160 psig & 210°F |
| <b>ASME Sect IV Water Side Htg Surface</b> | 111.08 Sq. Ft. / 10.32 Sq. M. | <b>Water Volume</b> | 13 gal. / 49.2 Liters |

\* Add circulator amps.

## BOILER TEMPERATURE RISE / PRESSURE DROP (Based on Full Input)

| 20°F / 11.1°C |     |               |      | 30°F / 16.7°C |     |               |      | 40°F / 22.2°C |     |               |      | 50°F / 27.8°C |     |               |      | 60°F / 33.3°C |     |               |     |
|---------------|-----|---------------|------|---------------|-----|---------------|------|---------------|-----|---------------|------|---------------|-----|---------------|------|---------------|-----|---------------|-----|
| Flow Rate     |     | Pressure Drop |      | Flow Rate     |     | Pressure Drop |      | Flow Rate     |     | Pressure Drop |      | Flow Rate     |     | Pressure Drop |      | Flow Rate     |     | Pressure Drop |     |
| GPM           | L/s | Ft            | kPa  | GPM           | L/s | Ft            | kPa  | GPM           | L/s | Ft            | kPa  | GPM           | L/s | Ft            | kPa  | GPM           | L/s | Ft            | kPa |
| 144.8         | 9.1 | 16.4          | 49.0 | 96.5          | 6.1 | 8.1           | 24.2 | 72.4          | 4.6 | 5.0           | 14.9 | 57.9          | 3.7 | 3.5           | 10.4 | 48.3          | 3.0 | 2.6           | 7.8 |

## WATER HEATER HOURLY RECOVERY CAPACITY (GPH & LPH)

| 40°F | 22°C  | 60°F | 33°C  | 80°F | 44°C | 100°F | 56°C | 120°F | 67°C | 140°F | 78°C |
|------|-------|------|-------|------|------|-------|------|-------|------|-------|------|
| 4367 | 16506 | 2911 | 11004 | 2183 | 8253 | 1747  | 6603 | 1456  | 5502 | 1248  | 4716 |

| Flow GPM |       | Temp. Rise** (°F) |     | Vent Length (Equiv. Ft.) |     | Air Inlet Length (Equiv. Ft.) |     |
|----------|-------|-------------------|-----|--------------------------|-----|-------------------------------|-----|
| Min      | Max   | Min               | Max | Min                      | Max | Min                           | Max |
| 48.3     | 144.8 | 20                | 60  | 8                        | 160 | 0                             | 160 |

\*\* Min/Max delta t reflects boiler operation at full input. For applications requiring operation above/below these parameters please consult factory.

|                     |       |
|---------------------|-------|
| <b>REP FIRM</b>     | _____ |
| <b>SUBMITTED BY</b> | _____ |
| <b>JOB NAME</b>     | _____ |
| <b>ARCHITECT</b>    | _____ |
| <b>ENGINEER</b>     | _____ |
| <b>CONTRACTOR</b>   | _____ |
| <b>DATE</b>         | _____ |

# TORUS 1500 VERTICAL

**Category II or Category IV Appliance**  
(see Installation and Operation Manual for venting information)



A Division of Mestek, Inc.  
Westfield, MA 01085  
(413) 564-5515

# TORUS 2000 VERTICAL

Category II or Category IV Appliance

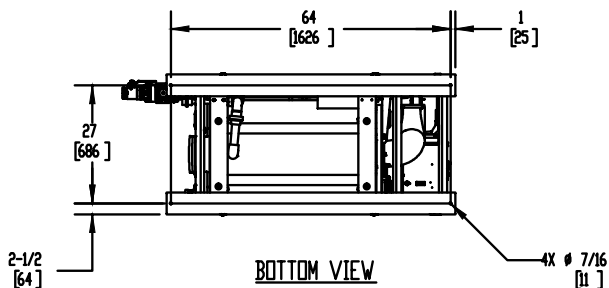
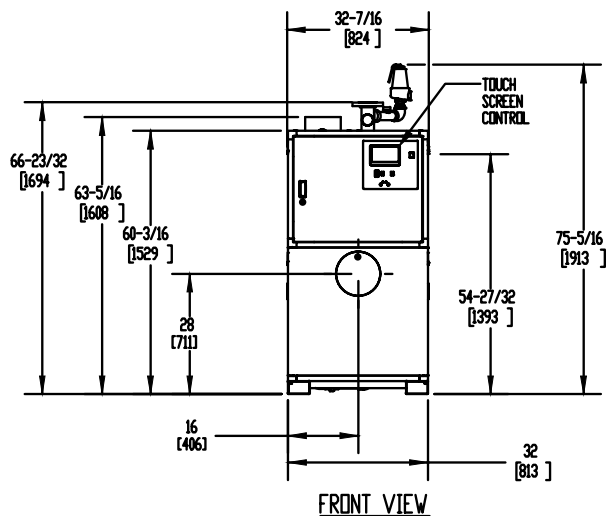
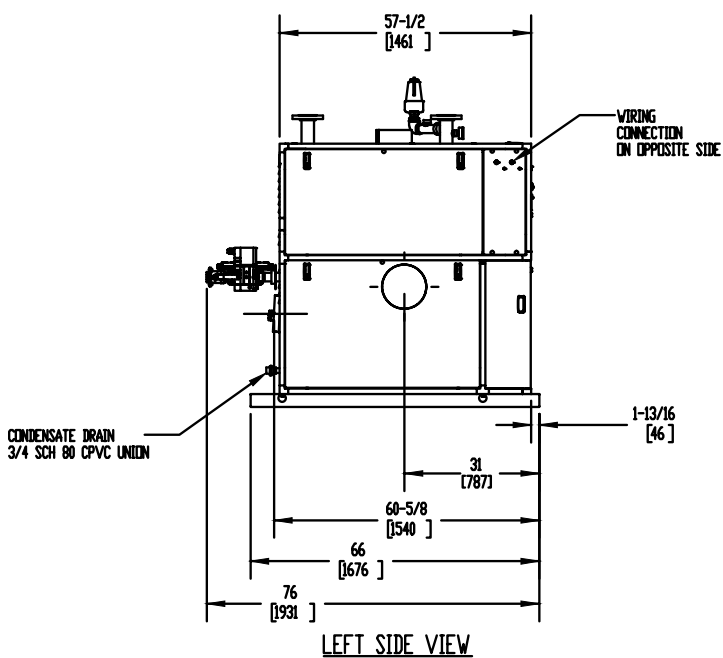
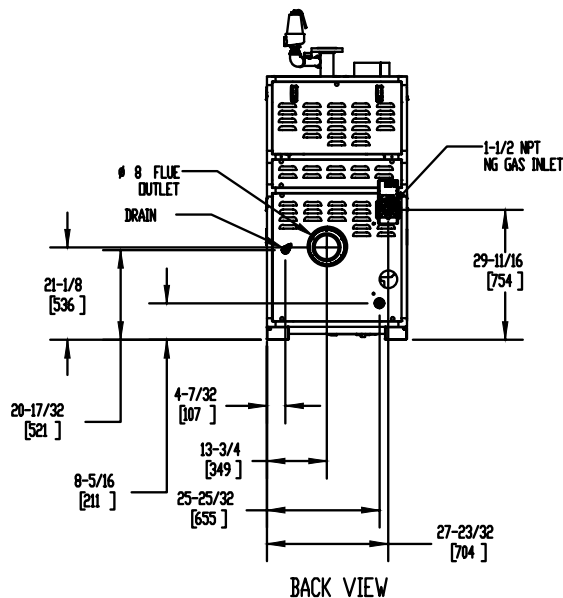
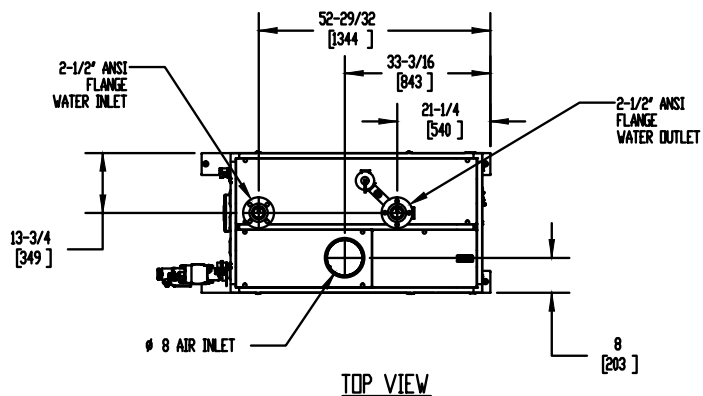
(see Installation and Operation Manual for venting information)

## CODE OPTIONS

CSD-1

FIRMWARE W/REMOTE  
TEST MANUAL RESET LWCO

## INDOOR UNIT



### Notes:

1. Dimensions are approximate and should not be used to "rough-in" equipment.
2. Dimensions are subject to change without notice.
3. All dimensions are in inches (mm).
4. ● Symbol indicates center of gravity.

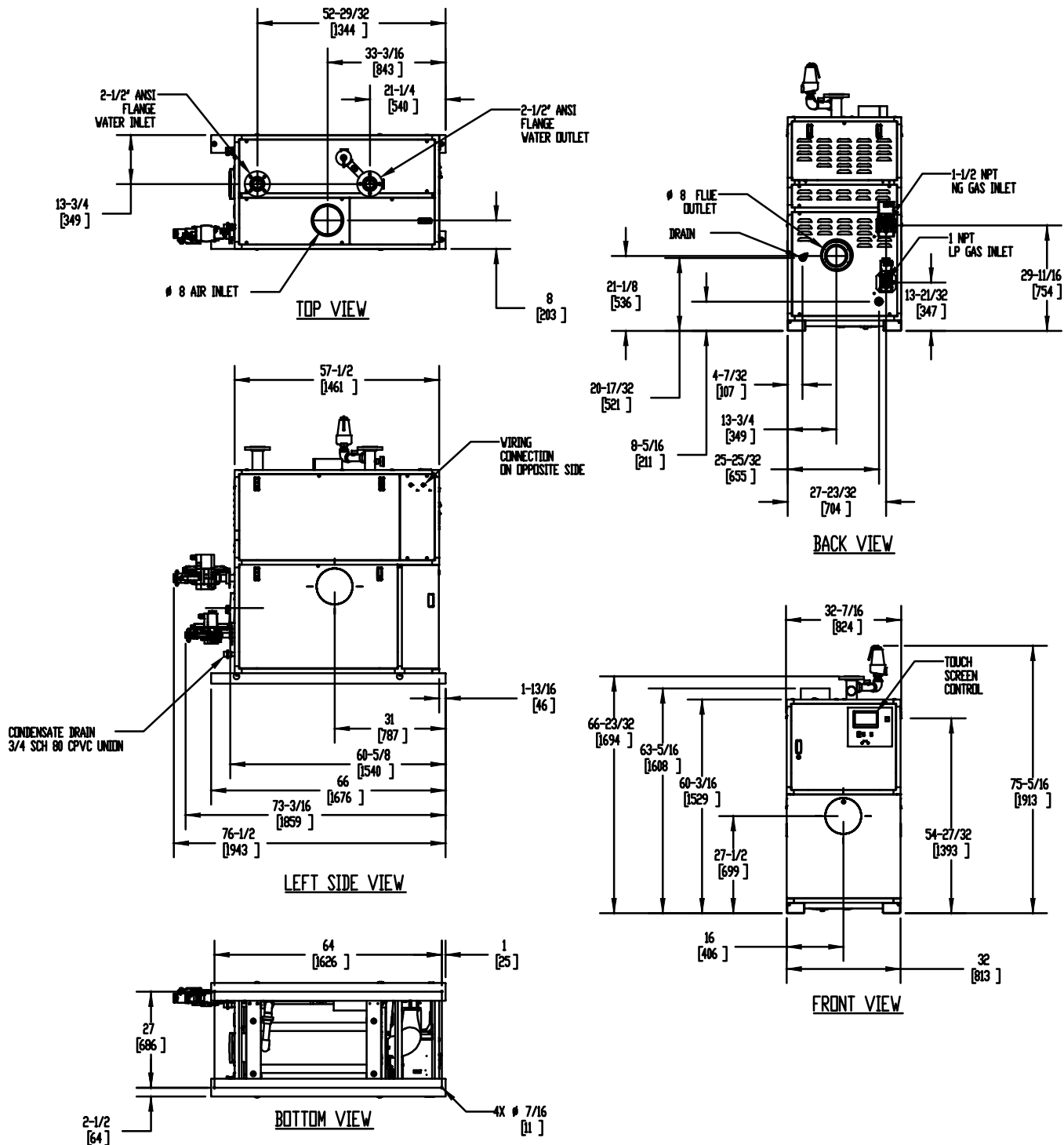
# TORUS 2000 VERTICAL

Category II or Category IV Appliance  
(see Installation and Operation Manual for venting information)

## CODE OPTIONS

|       |   |
|-------|---|
| CSD-1 | FIRMWARE W/REMOTE<br>TEST MANUAL RESET LWCO |
|-------|---|

## DUAL FUEL UNIT



### Notes:

1. Dimensions are approximate and should not be used to "rough-in" equipment.
2. Dimensions are subject to change without notice.
3. All dimensions are in inches (mm).
4. ● Symbol indicates center of gravity.



## BOILER CERTIFIED RATINGS & CAPACITIES

|                                |                     |                                   |                   |
|--------------------------------|---------------------|-----------------------------------|-------------------|
| <b>Fuel Type</b>               | Natural/Propane Gas | <b>Boiler FLA</b>                 | 25.6              |
| <b>Input BTU/hr.</b>           | 1,999,000 / 586 kW  | <b>Boiler HP</b>                  | 57.66             |
| <b>Output BTU/hr.</b>          | 1,929,035 / 565 kW  | <b>Min. Gas Pressure Required</b> | 4" W.C.           |
| <b>Electrical Requirements</b> | 230 VAC/60 Hz/1PH   | <b>Max. Gas Pressure Allowed</b>  | 14" W.C.          |
|                                |                     | <b>Operating Weight</b>           | 1388 lbs / 630 kg |

## BOILER TRIM & CONTROLS

|  |               |                            |                          |
|--|---------------|----------------------------|--------------------------|
| <b>Main Gas Valve</b>  | Dungs MBC     | <b>Air Switch</b>          | Huba                     |
| <b>Firing Valve</b>  | 1 1/2" Apollo | <b>Flow Switch</b>         | SIKA                     |
| <b>Ignition Control</b>  | Fenwal        | <b>Blocked Flue Switch</b> | Cleveland NS2            |
| <b>Operating Control</b>   | HeatNet®      | <b>Blower Motor</b>        | Ametek                   |
| <b>High Limit</b>  | Jumo          | <b>L.W.C.O.</b>            | 800                      |
| <b>Main Ball Valve</b>   | 1 1/2" Apollo | <b>Relief Valve (WB)</b>   | 1" x 1-1/4" set @ 50 psi |
| Pump contactor strongly recommended for water heater applications. |               | <b>Relief Valve (WW)</b>   | 1" x 1" set @ 125 psi    |

## A.S.M.E.

|  |                               |                     |                       |
|--|-------------------------------|---------------------|-----------------------|
| <b>ASME Sect IV Fire Side Htg Surface</b>  | 153.19 Sq. Ft. / 14.23 Sq. M. | <b>Design Data</b>  | Max. 160 psig & 210°F |
| <b>ASME Sect IV Water Side Htg Surface</b> | 141.93 Sq. Ft. / 13.19 Sq. M. | <b>Water Volume</b> | 16.9 gal. / 64 Liters |

\* Add circulator amps.

## BOILER TEMPERATURE RISE / PRESSURE DROP (Based on Full Input)


| 20°F / 11.1°C |      |               |      | 30°F / 16.7°C |     |               |      | 40°F / 22.2°C |     |               |      | 50°F / 27.8°C |     |               |      | 60°F / 33.3°C |     |               |     |
|---------------|------|---------------|------|---------------|-----|---------------|------|---------------|-----|---------------|------|---------------|-----|---------------|------|---------------|-----|---------------|-----|
| Flow Rate     |      | Pressure Drop |      | Flow Rate     |     | Pressure Drop |      | Flow Rate     |     | Pressure Drop |      | Flow Rate     |     | Pressure Drop |      | Flow Rate     |     | Pressure Drop |     |
| GPM           | L/s  | Ft            | kPa  | GPM           | L/s | Ft            | kPa  | GPM           | L/s | Ft            | kPa  | GPM           | L/s | Ft            | kPa  | GPM           | L/s | Ft            | kPa |
| 193.0         | 12.2 | 20.1          | 60.1 | 128.7         | 8.1 | 9.9           | 29.7 | 96.5          | 6.1 | 6.1           | 18.2 | 77.2          | 4.9 | 4.2           | 12.5 | 64.3          | 4.1 | 3.1           | 9.2 |

## WATER HEATER HOURLY RECOVERY CAPACITY (GPH & LPH)

|      |       |      |       |      |       |       |      |       |      |       |      |
|------|-------|------|-------|------|-------|-------|------|-------|------|-------|------|
| 40°F | 22°C  | 60°F | 33°C  | 80°F | 44°C  | 100°F | 56°C | 120°F | 67°C | 140°F | 78°C |
| 5819 | 21997 | 3880 | 14665 | 2910 | 10999 | 2328  | 8799 | 1940  | 7332 | 1663  | 6285 |

| Flow GPM |  |       |  | Temp. Rise** (°F) |  |     |  | Vent Length (Equiv. Ft.) |  |     |  | Air Inlet Length (Equiv. Ft.) |  |     |  |
|----------|--|-------|--|-------------------|--|-----|--|--------------------------|--|-----|--|-------------------------------|--|-----|--|
| Min      |  | Max   |  | Min               |  | Max |  | Min                      |  | Max |  | Min                           |  | Max |  |
| 64.3     |  | 193.0 |  | 20                |  | 60  |  | 8                        |  | 160 |  | 0                             |  | 160 |  |

\*\* Min/Max delta t reflects boiler operation at full input. For applications requiring operation above/below these parameters please consult factory.

|                     |       |  |
|---------------------|-------|--|
| <b>REP FIRM</b>     | _____ | <h1 style="margin: 0;">TORUS 2000 VERTICAL</h1> <p style="margin: 0;"><b>Category II or Category IV Appliance</b><br/>(see Installation and Operation Manual for venting information)</p>  <p style="margin: 0;">A Division of Mestek, Inc.<br/>Westfield, MA 01085<br/>(413) 564-5515</p> <p style="margin: 0; font-size: small;">RELIABLE. BOLD. INNOVATIVE.</p> |
| <b>SUBMITTED BY</b> | _____ |  |
| <b>JOB NAME</b>     | _____ |  |
| <b>ARCHITECT</b>    | _____ |  |
| <b>ENGINEER</b>     | _____ |  |
| <b>CONTRACTOR</b>   | _____ |  |
| <b>DATE</b>         | _____ |  |

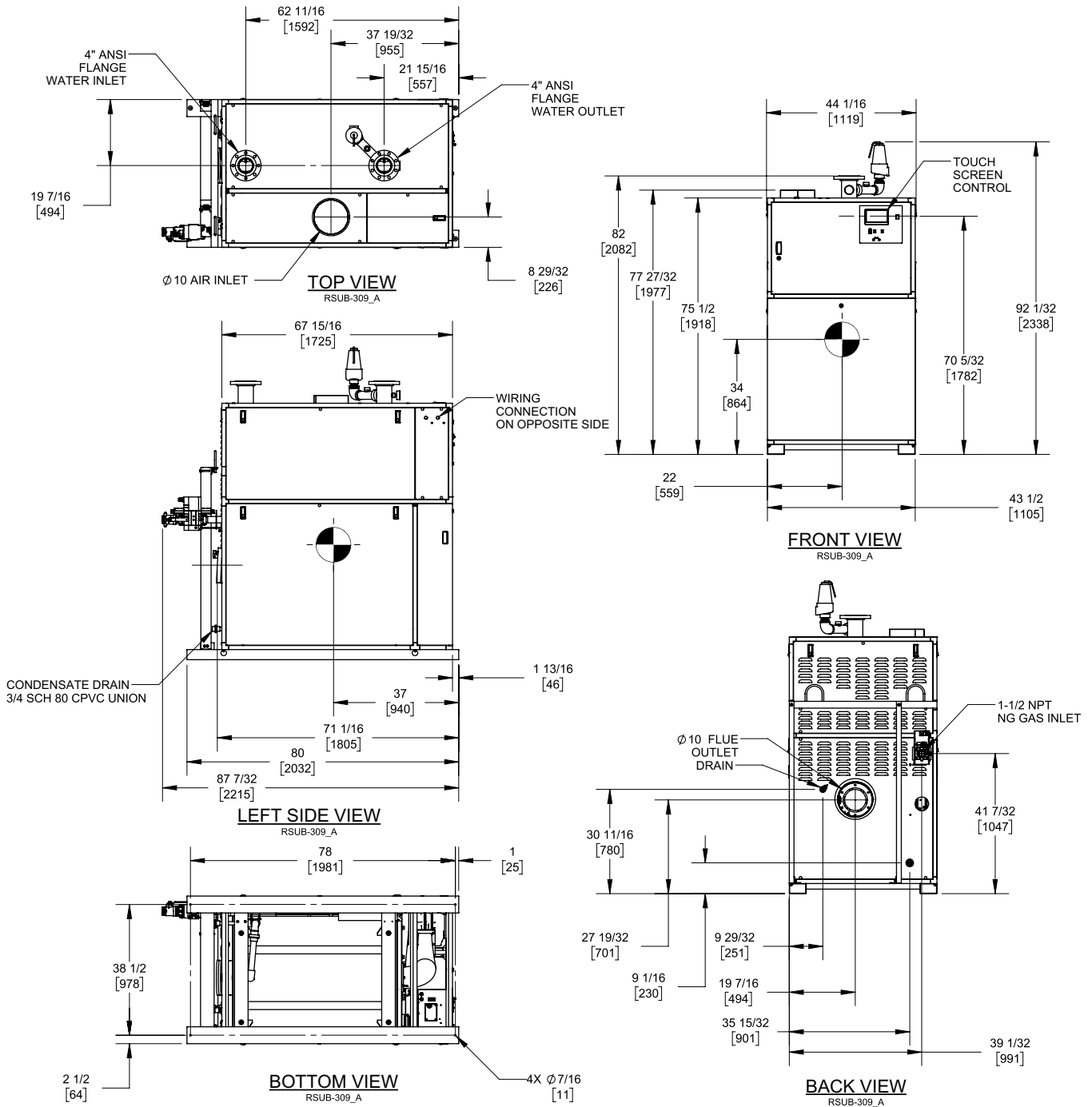
# TORUS 3000 VERTICAL

Category II or Category IV Appliance  
(see Installation and Operation Manual for venting information)

## CODE OPTIONS

|       |   |
|-------|---|
| CSD-1 | FIRMWARE W/REMOTE<br>TEST MANUAL RESET LWCO |
|-------|---|

## INDOOR UNIT



### Notes:

1. Dimensions are approximate and should not be used to "rough-in" equipment.
2. Dimensions are subject to change without notice.
3. All dimensions are in inches (mm).
4. Symbol indicates center of gravity.

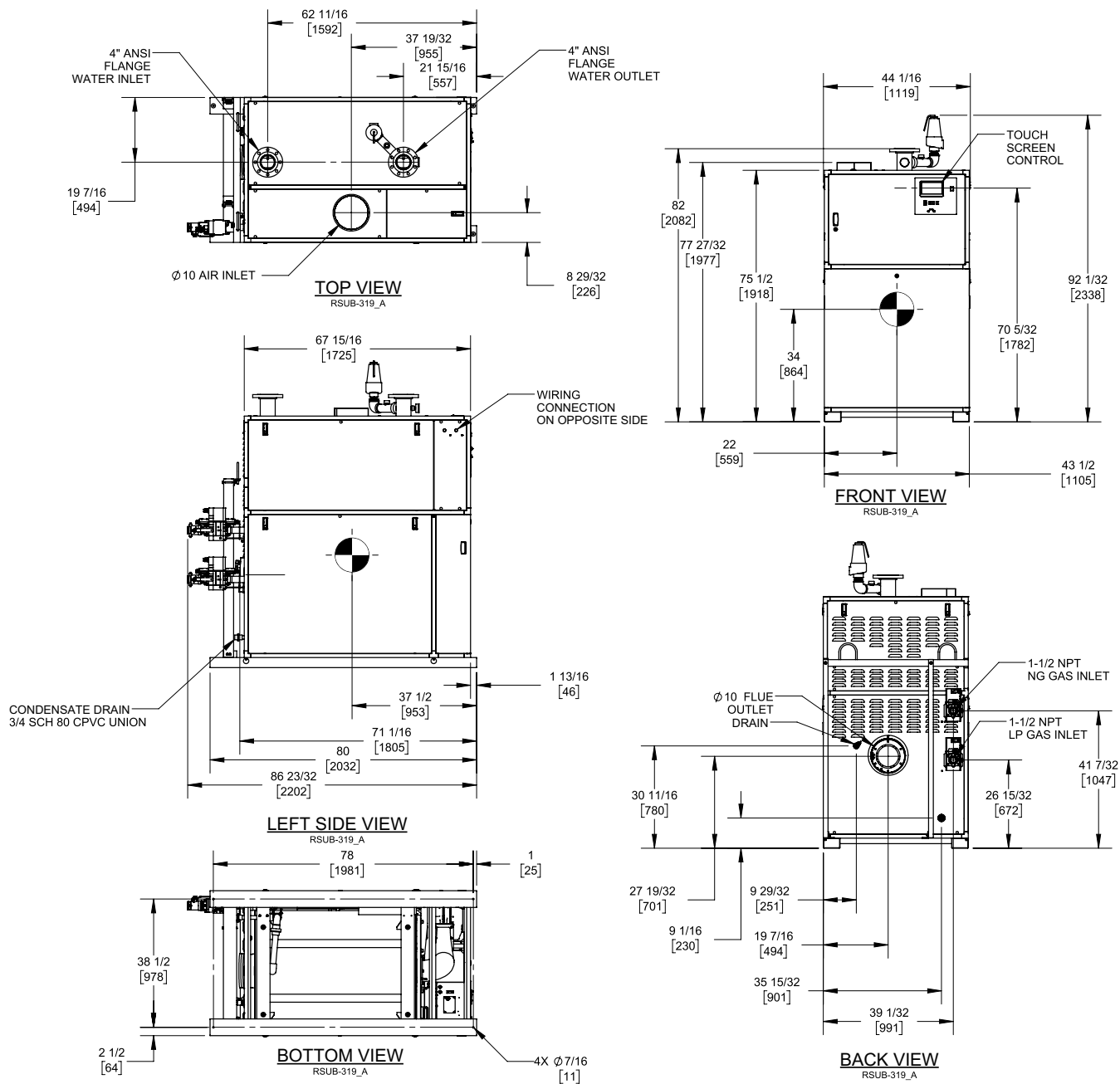
# TORUS 3000 VERTICAL

Category II or Category IV Appliance  
(see Installation and Operation Manual for venting information)

## CODE OPTIONS

|       |   |
|-------|---|
| CSD-1 | FIRMWARE W/REMOTE<br>TEST MANUAL RESET LWCO |
|-------|---|

## DUAL FUEL UNIT



### Notes:

1. Dimensions are approximate and should not be used to "rough-in" equipment.
2. Dimensions are subject to change without notice.
3. All dimensions are in inches (mm).
4. ● Symbol indicates center of gravity.

## BOILER CERTIFIED RATINGS & CAPACITIES

|                                |                     |                                   |                    |
|--------------------------------|---------------------|-----------------------------------|--------------------|
| <b>Fuel Type</b>               | Natural/Propane Gas | <b>Boiler FLA</b>                 | 15.05*             |
| <b>Input BTU/hr.</b>           | 3,000,000 / 879 kW  | <b>Boiler HP</b>                  | 87.39              |
| <b>Output BTU/hr.</b>          | 2,925,000 / 857 kW  | <b>Min. Gas Pressure Required</b> | 4" W.C.            |
| <b>Electrical Requirements</b> | 230 VAC/60 Hz/3PH   | <b>Max. Gas Pressure Allowed</b>  | 14" W.C.           |
|                                |                     | <b>Operating Weight</b>           | 2311 lbs / 1048 kg |

## BOILER TRIM & CONTROLS

|                          |               |                            |                               |
|--------------------------|---------------|----------------------------|-------------------------------|
| <b>Main Gas Valve</b>    | Dungs MBC     | <b>Air Switch</b>          | Huba                          |
| <b>Firing Valve</b>      | 1 1/2" Apollo | <b>Flow Switch</b>         | SIKA                          |
| <b>Ignition Control</b>  | Fenwal        | <b>Blocked Flue Switch</b> | Cleveland NS2                 |
| <b>Operating Control</b> | HeatNet®      | <b>Blower Motor</b>        | Ametek                        |
| <b>High Limit</b>        | Jumo          | <b>L.W.C.O.</b>            | 800                           |
| <b>Main Ball Valve</b>   | 1 1/2" Apollo | <b>Relief Valve (WB)</b>   | 1" x 1 1/2" set @ 50 psi      |
|                          |               | <b>Relief Valve (WW)</b>   | 1 1/2" x 1 1/2" set @ 125 psi |

Pump contactor strongly recommended for water heater applications.

## A.S.M.E.

|  |                               |                     |                         |
|--|-------------------------------|---------------------|-------------------------|
| <b>ASME Sect IV Fire Side Htg Surface</b>  | 300.69 Sq. Ft. / 27.94 Sq. M. | <b>Design Data</b>  | Max. 160 psig & 210°F   |
| <b>ASME Sect IV Water Side Htg Surface</b> | 277.23 Sq. Ft. / 25.76 Sq. M. | <b>Water Volume</b> | 24.9 gal. / 94.3 Liters |

\* Add circulator amps.

## BOILER TEMPERATURE RISE / PRESSURE DROP (Based on Full Input)

| 20°F / 11.1°C |      |               |      | 30°F / 16.7°C |      |               |      | 40°F / 22.2°C |     |               |      | 50°F / 27.8°C |     |               |      | 60°F / 33.3°C |     |               |      |
|---------------|------|---------------|------|---------------|------|---------------|------|---------------|-----|---------------|------|---------------|-----|---------------|------|---------------|-----|---------------|------|
| Flow Rate     |      | Pressure Drop |      | Flow Rate     |      | Pressure Drop |      | Flow Rate     |     | Pressure Drop |      | Flow Rate     |     | Pressure Drop |      | Flow Rate     |     | Pressure Drop |      |
| GPM           | L/s  | Ft            | kPa  | GPM           | L/s  | Ft            | kPa  | GPM           | L/s | Ft            | kPa  | GPM           | L/s | Ft            | kPa  | GPM           | L/s | Ft            | kPa  |
| 292.6         | 18.5 | 21.0          | 62.7 | 195.1         | 12.3 | 11.8          | 35.3 | 146.3         | 9.2 | 7.9           | 23.7 | 117.0         | 7.4 | 5.8           | 17.4 | 97.5          | 6.2 | 4.5           | 13.5 |

## WATER HEATER HOURLY RECOVERY CAPACITY (GPH & LPH)

| 40°F | 22°C  | 60°F | 33°C  | 80°F | 44°C  | 100°F | 56°C  | 120°F | 67°C  | 140°F | 78°C |
|------|-------|------|-------|------|-------|-------|-------|-------|-------|-------|------|
| 8824 | 33353 | 5882 | 22235 | 4412 | 16676 | 3529  | 13341 | 2941  | 11118 | 2521  | 9529 |

| Flow GPM |       | Temp. Rise** (°F) |     | Vent Length (Equiv. Ft.) |     | Air Inlet Length (Equiv. Ft.) |     |
|----------|-------|-------------------|-----|--------------------------|-----|-------------------------------|-----|
| Min      | Max   | Min               | Max | Min                      | Max | Min                           | Max |
| 97.5     | 292.6 | 20                | 60  | 10                       | 160 | 0                             | 160 |

\*\* Min/Max delta t reflects boiler operation at full input. For applications requiring operation above/below these parameters please consult factory.

|                     |       |
|---------------------|-------|
| <b>REP FIRM</b>     | _____ |
| <b>SUBMITTED BY</b> | _____ |
| <b>JOB NAME</b>     | _____ |
| <b>ARCHITECT</b>    | _____ |
| <b>ENGINEER</b>     | _____ |
| <b>CONTRACTOR</b>   | _____ |
| <b>DATE</b>         | _____ |

# TORUS 3000 VERTICAL

**Category II or Category IV Appliance**  
(see Installation and Operation Manual for venting information)



A Division of Mestek, Inc.  
Westfield, MA 01085  
(413) 564-5515

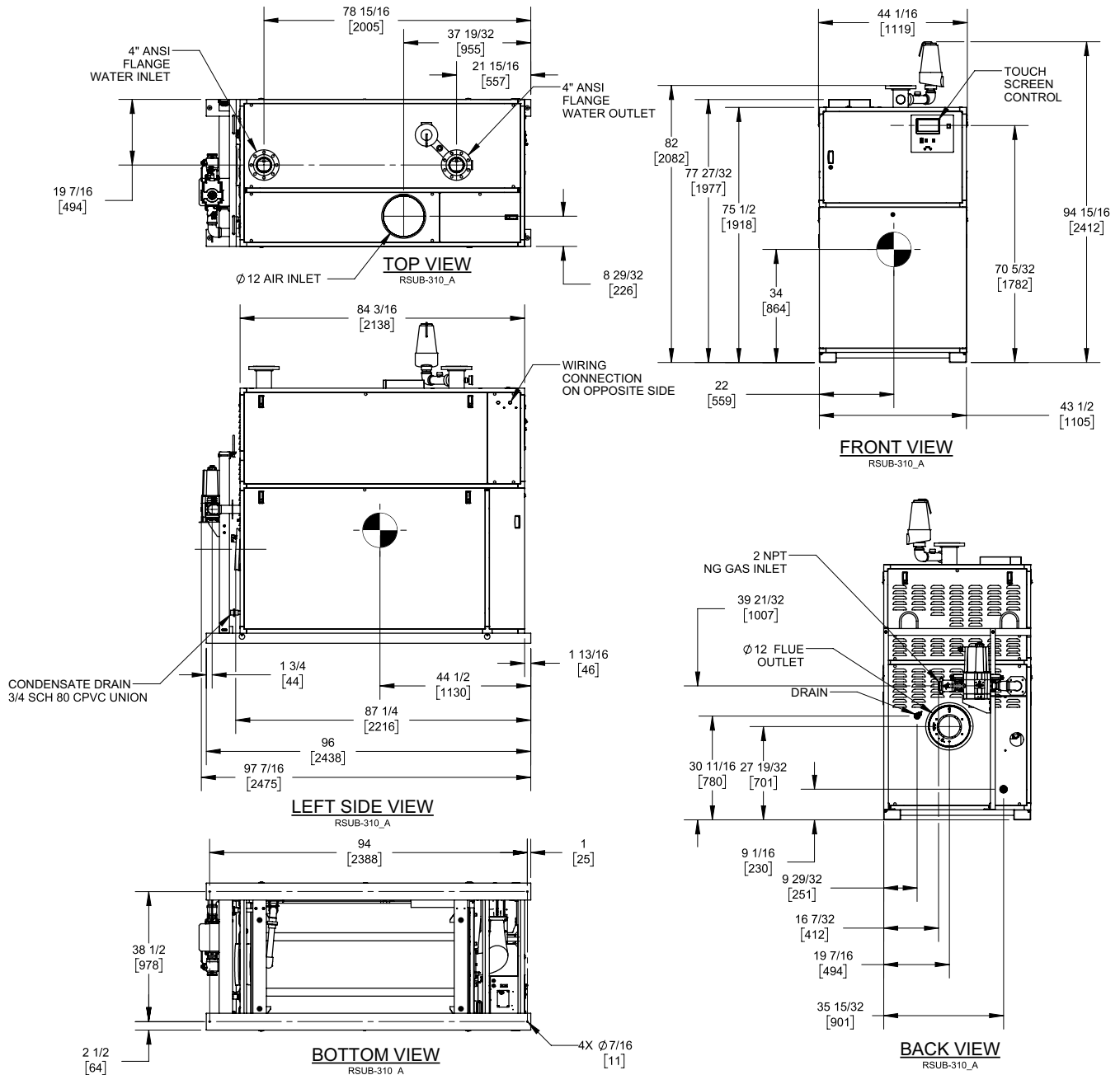
# TORUS 4000 VERTICAL

Category II or Category IV Appliance  
(see Installation and Operation Manual for venting information)

## CODE OPTIONS

|       |   |
|-------|---|
| CSD-1 | FIRMWARE W/REMOTE<br>TEST MANUAL RESET LWCO |
|-------|---|

## INDOOR UNIT



### Notes:

1. Dimensions are approximate and should not be used to "rough-in" equipment.
2. Dimensions are subject to change without notice.
3. All dimensions are in inches (mm).
4. ● Symbol indicates center of gravity.

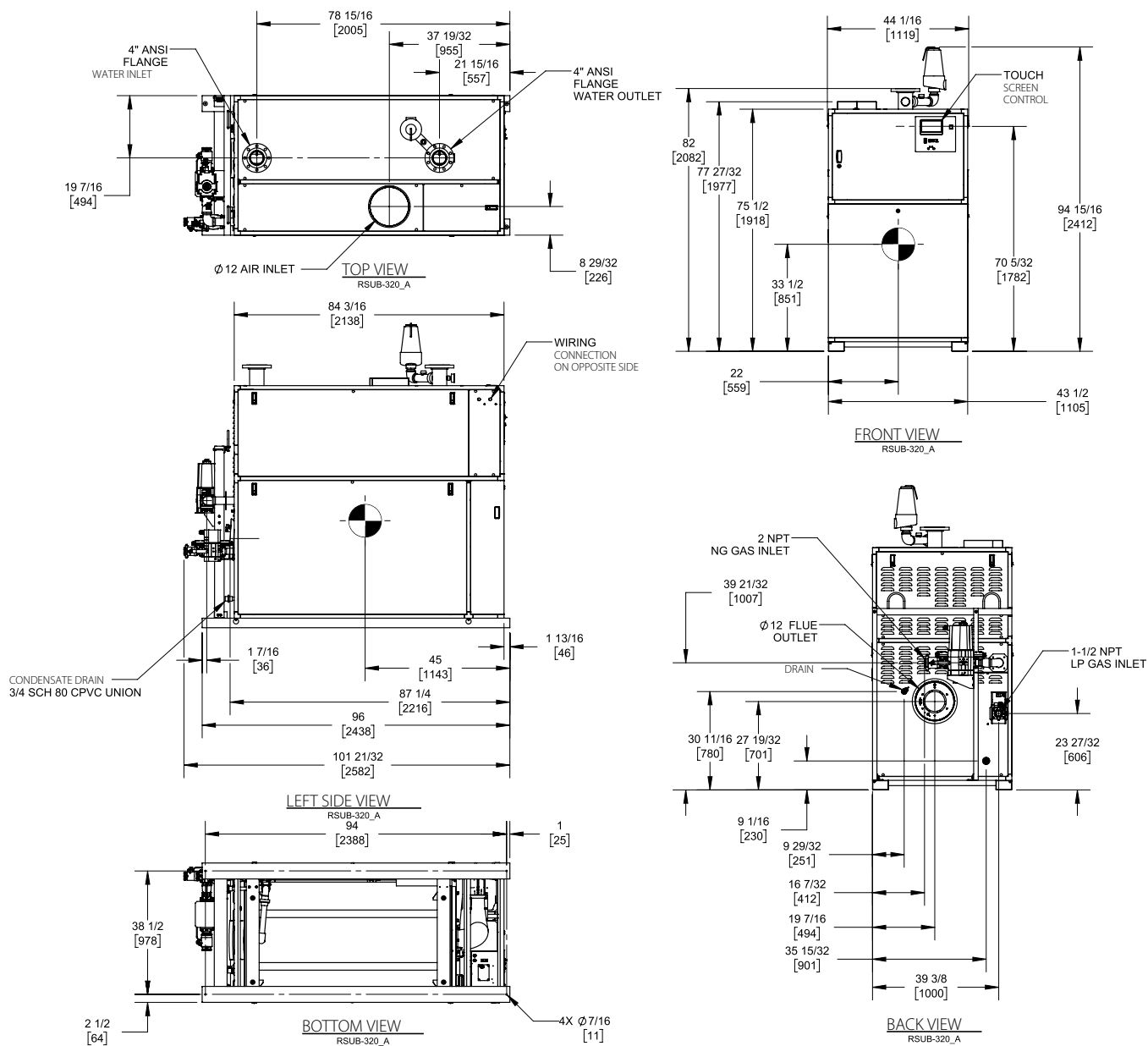
# TORUS 4000 VERTICAL

Category II or Category IV Appliance  
(see Installation and Operation Manual for venting information)

## CODE OPTIONS

|       |   |
|-------|---|
| CSD-1 | FIRMWARE W/REMOTE<br>TEST MANUAL RESET LWCO |
|-------|---|

## DUAL FUEL UNIT



### Notes:

1. Dimensions are approximate and should not be used to "rough-in" equipment.
2. Dimensions are subject to change without notice.
3. All dimensions are in inches (mm).
4. Symbol indicates center of gravity.

## BOILER CERTIFIED RATINGS & CAPACITIES

|                                |                     |                                   |                    |
|--------------------------------|---------------------|-----------------------------------|--------------------|
| <b>Fuel Type</b>               | Natural/Propane Gas | <b>Boiler FLA</b>                 | 19.9*              |
| <b>Input BTU/hr.</b>           | 4,000,000 / 1172kW  | <b>Boiler HP</b>                  | 116.52             |
| <b>Output BTU/hr.</b>          | 3,900,000 / 1143 kW | <b>Min. Gas Pressure Required</b> | 4" W.C.            |
| <b>Electrical Requirements</b> | 230 VAC/60 Hz/3PH   | <b>Max. Gas Pressure Allowed</b>  | 14" W.C.           |
|                                |                     | <b>Operating Weight</b>           | 2866 lbs / 1300 kg |

## BOILER TRIM & CONTROLS

|  |               |                            |                               |
|--|---------------|----------------------------|-------------------------------|
| <b>Main Gas Valve</b>  | Dungs MBC     | <b>Air Switch</b>          | Huba                          |
| <b>Firing Valve</b>  | 1 1/2" Apollo | <b>Flow Switch</b>         | SIKA                          |
| <b>Ignition Control</b>  | Fenwal        | <b>Blocked Flue Switch</b> | Cleveland NS2                 |
| <b>Operating Control</b>   | HeatNet®      | <b>Blower Motor</b>        | Ametek                        |
| <b>High Limit</b>  | Jumo          | <b>L.W.C.O.</b>            | 800                           |
| <b>Main Ball Valve</b>   | 1 1/2" Apollo | <b>Relief Valve (WB)</b>   | 1" x 1 1/2" set @ 50 psi      |
| Pump contactor strongly recommended for water heater applications. |               | <b>Relief Valve (WW)</b>   | 1 1/2" x 1 1/2" set @ 125 psi |

## A.S.M.E.

|                                |                               |                     |                          |
|--------------------------------|-------------------------------|---------------------|--------------------------|
| <b>ASME Sect IV Fire Side</b>  | 402.93 Sq. Ft. / 37.43 Sq. M. | <b>Design Data</b>  | Max. 160 psig & 210°F    |
| <b>Htg Surface</b>             |                               | <b>Water Volume</b> | 41.3 gal. / 156.3 Liters |
| <b>ASME Sect IV Water Side</b> | 371.25 Sq. Ft. / 34.49 Sq. M. |                     |                          |
| <b>Htg Surface</b>             |                               |                     |                          |

\* Add circulator amps.

## BOILER TEMPERATURE RISE / PRESSURE DROP (Based on Full Input)

| 20°F / 11.1°C |      |               |      | 30°F / 16.7°C |      |               |      | 40°F / 22.2°C |      |               |      | 50°F / 27.8°C |     |               |      | 60°F / 33.3°C |     |               |      |
|---------------|------|---------------|------|---------------|------|---------------|------|---------------|------|---------------|------|---------------|-----|---------------|------|---------------|-----|---------------|------|
| Flow Rate     |      | Pressure Drop |      | Flow Rate     |      | Pressure Drop |      | Flow Rate     |      | Pressure Drop |      | Flow Rate     |     | Pressure Drop |      | Flow Rate     |     | Pressure Drop |      |
| GPM           | L/s  | Ft            | kPa  | GPM           | L/s  | Ft            | kPa  | GPM           | L/s  | Ft            | kPa  | GPM           | L/s | Ft            | kPa  | GPM           | L/s | Ft            | kPa  |
| 390.2         | 24.6 | 19.9          | 59.6 | 260.1         | 16.4 | 10.1          | 30.2 | 195.1         | 12.3 | 6.5           | 19.3 | 156.1         | 9.8 | 4.7           | 14.0 | 130.1         | 8.2 | 3.7           | 10.9 |

## WATER HEATER HOURLY RECOVERY CAPACITY (GPH & LPH)

| 40°F  | 22°C  | 60°F | 33°C  | 80°F | 44°C  | 100°F | 56°C  | 120°F | 67°C  | 140°F | 78°C  |
|-------|-------|------|-------|------|-------|-------|-------|-------|-------|-------|-------|
| 11765 | 44471 | 7843 | 29647 | 5882 | 22235 | 4706  | 17788 | 3922  | 14824 | 3361  | 12706 |

| Flow GPM |       | Temp. Rise** (°F) |     | Vent Length (Equiv. Ft.) |     | Air Inlet Length (Equiv. Ft.) |     |
|----------|-------|-------------------|-----|--------------------------|-----|-------------------------------|-----|
| Min      | Max   | Min               | Max | Min                      | Max | Min                           | Max |
| 130.1    | 390.2 | 20                | 60  | 12                       | 160 | 0                             | 160 |

\*\* Min/Max delta t reflects boiler operation at full input. For applications requiring operation above/below these parameters please consult factory.

|                     |       |
|---------------------|-------|
| <b>REP FIRM</b>     | _____ |
| <b>SUBMITTED BY</b> | _____ |
| <b>JOB NAME</b>     | _____ |
| <b>ARCHITECT</b>    | _____ |
| <b>ENGINEER</b>     | _____ |
| <b>CONTRACTOR</b>   | _____ |
| <b>DATE</b>         | _____ |

# TORUS 4000 VERTICAL

**Category II or Category IV Appliance**  
(see Installation and Operation Manual for venting information)



A Division of Mestek, Inc.  
Westfield, MA 01085  
(413) 564-5515